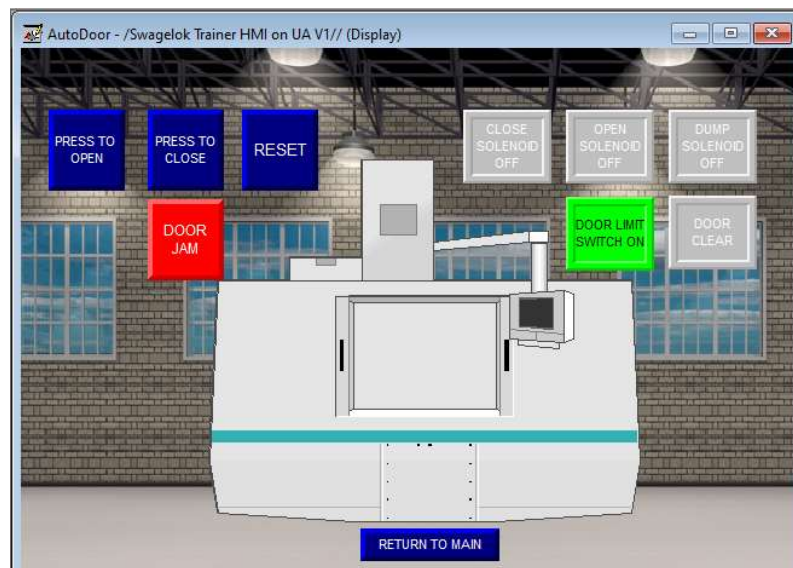


Lab Activity 2

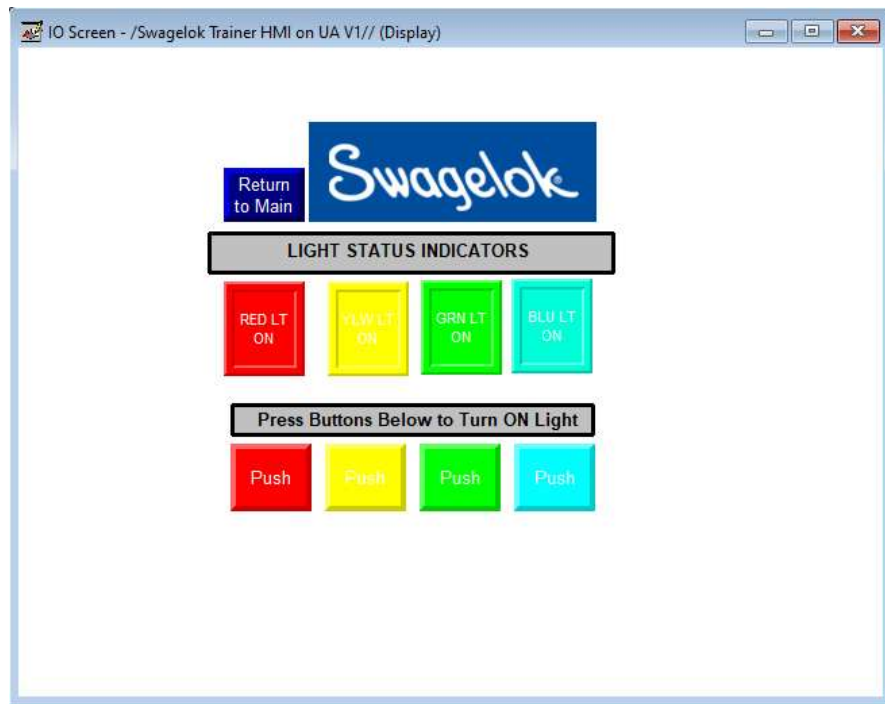
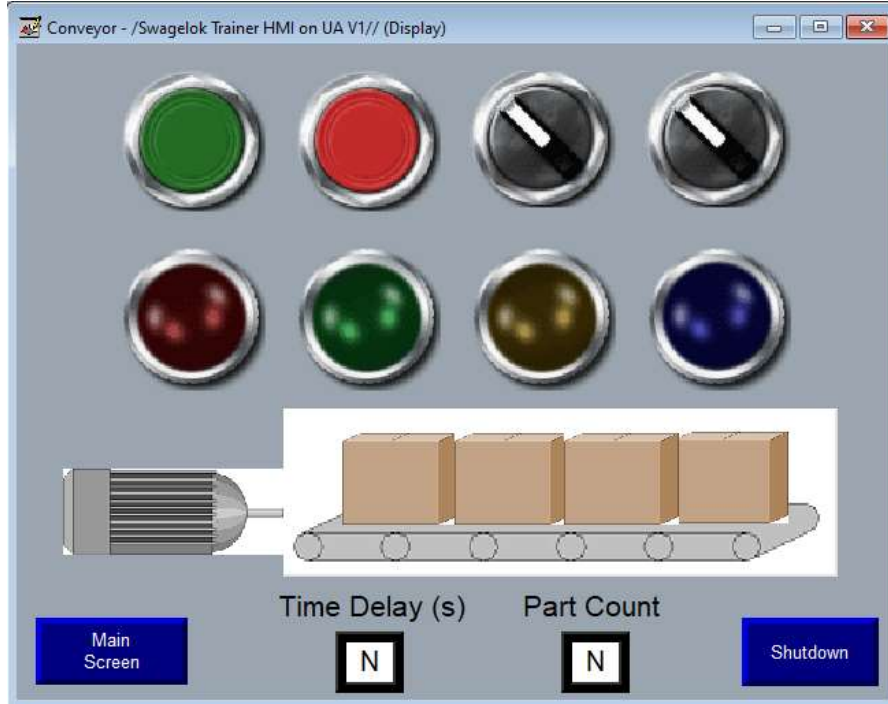
Creating Displays and Adding Graphic Objects

1. Open your “Swagelok_PLC_Trainer” application in FactoryTalkView Studio – View Machine Edition
2. Add display navigation as shown below:



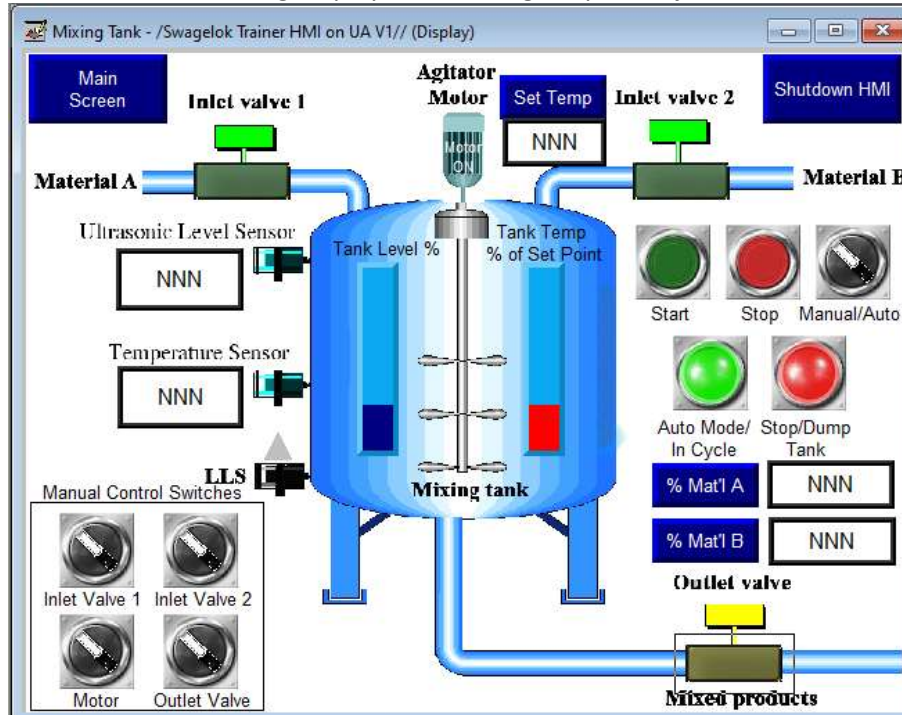
Lab Activity 2

Creating Displays and Adding Graphic Objects



Lab Activity 2

Creating Displays and Adding Graphic Objects



3. Add an On Top display similar to the below image. Add navigation to get to the On Top display to the Main Display. Make the Close button blink.

