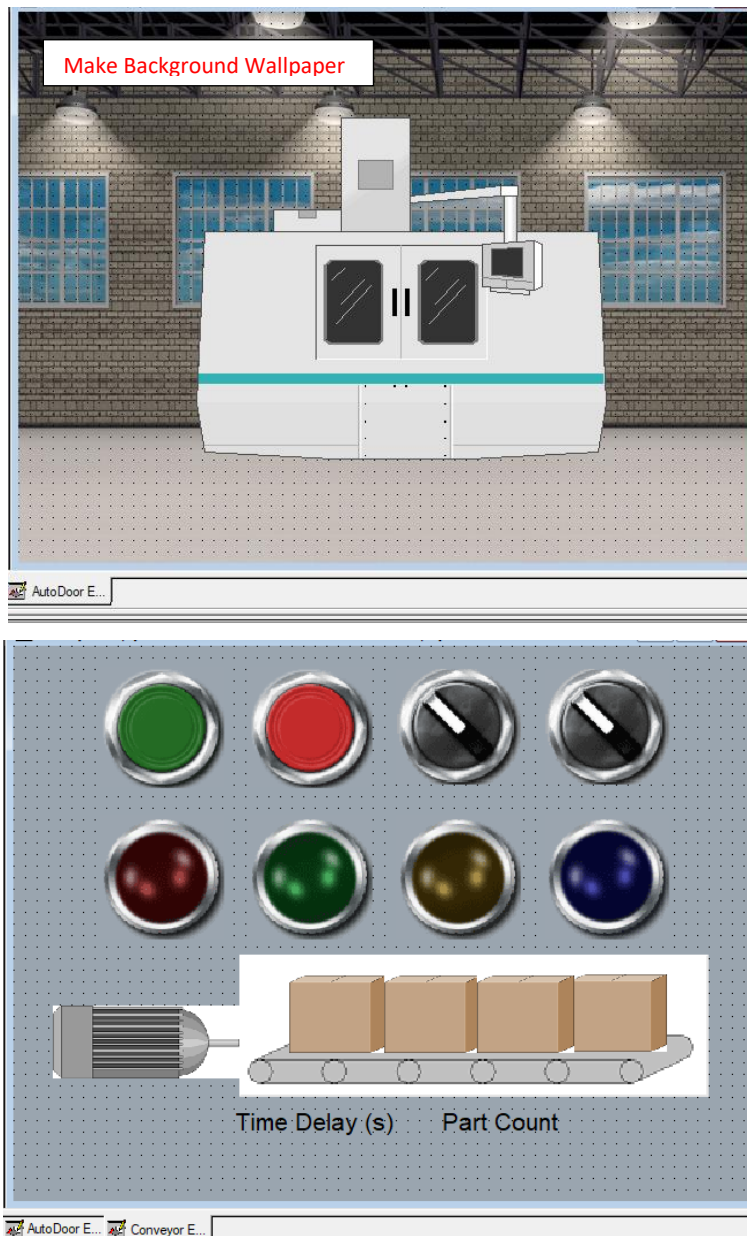


Lab Activity 1

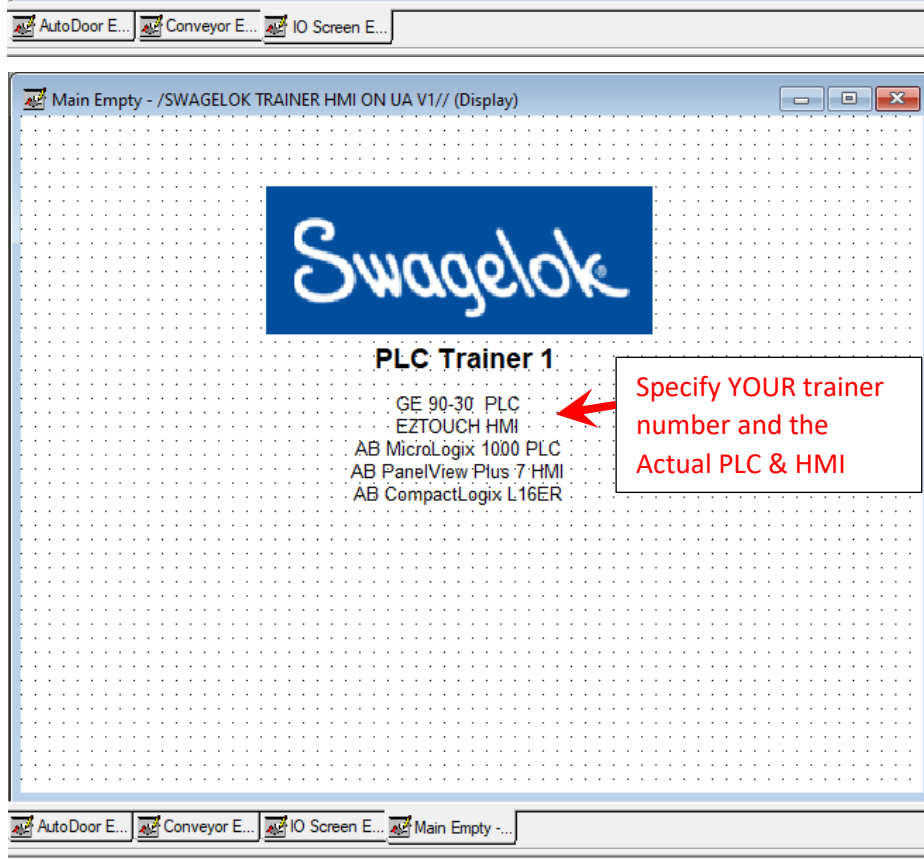
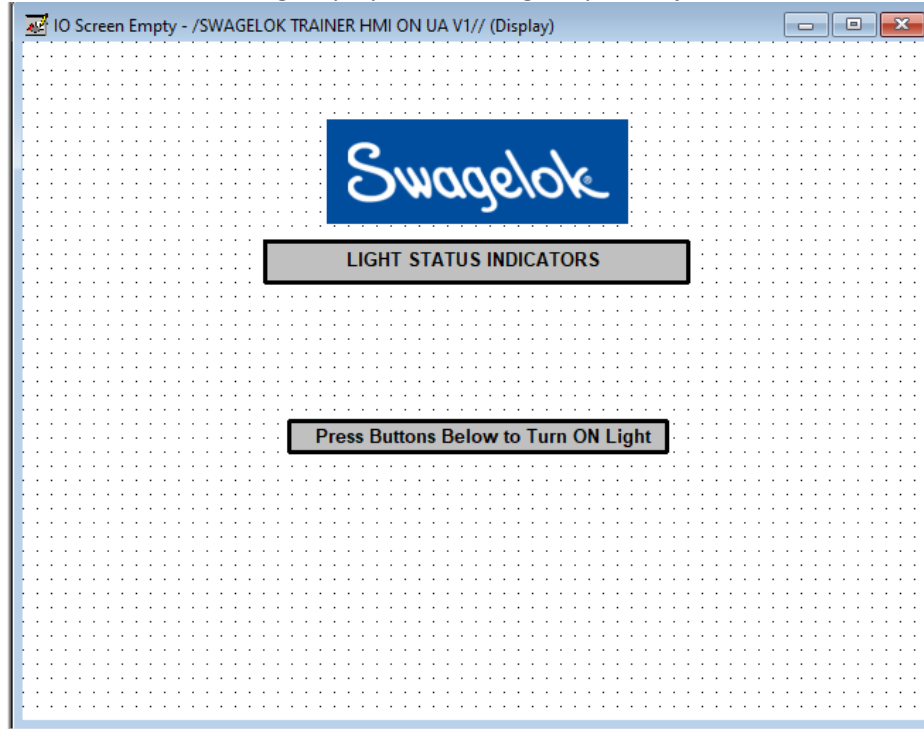
Creating Displays and Adding Graphic Objects

1. Open your "Swagelok_PLC_Trainer" application in FactoryTalkView Studio – View Machine Edition
2. Create the following new displays:
 1. AutoDoor
 2. Conveyor
 3. IO Screen
 4. Mixing Tank
3. Add Static Graphics to make each display (including Main) appear similar to the following:



Lab Activity 1

Creating Displays and Adding Graphic Objects



Lab Activity 1

Creating Displays and Adding Graphic Objects

