

Powering Up PanelView Plus 7

Dan Kandray

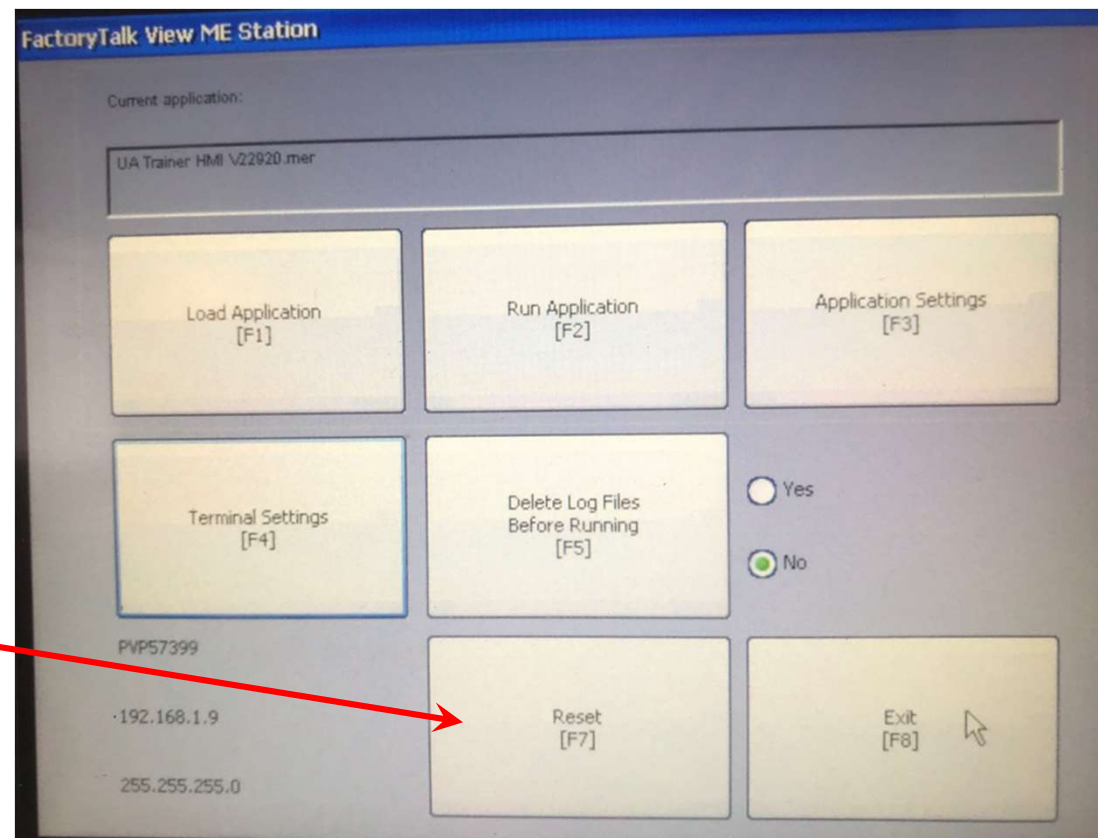
January 30, 2020

PanelView Plus 7 Terminal

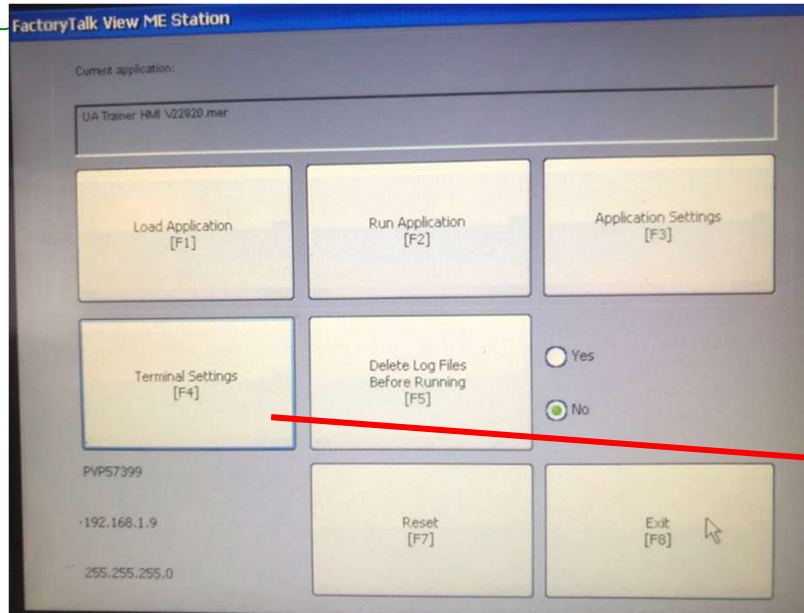
- At (1st time) power-up, the configuration Mode Screen appears
 - Used to configure terminal settings and perform other file-management tasks

Note: This image shows a previously configured terminal

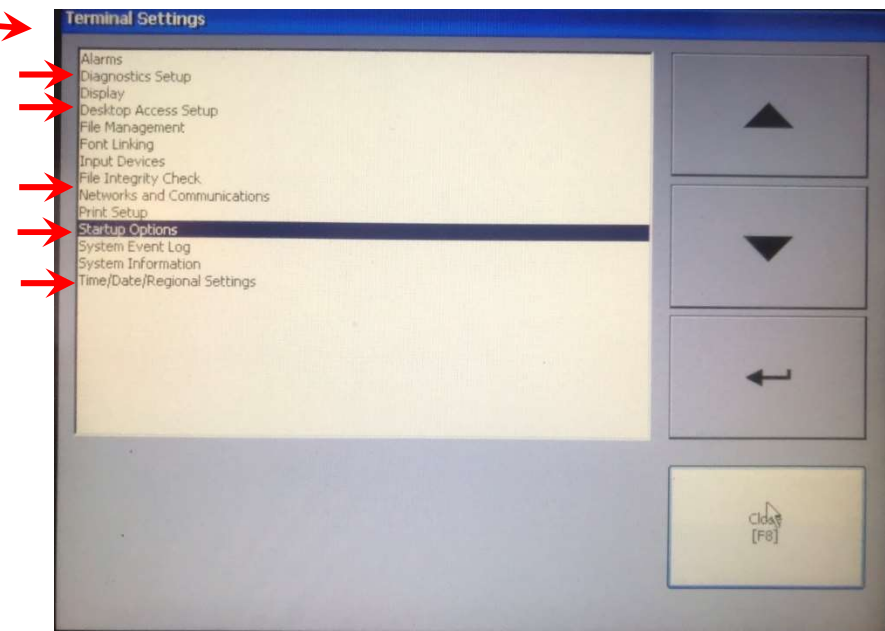
For certain configuration settings (ie, IP address), the terminal must be reset for the changes to take effect



Terminal Settings Screen



Before running an application, configuring several nonapplication-related terminal settings is required.



At a minimum, one needs to configure items from the following submenus:

- Diagnostic Setup
- Desktop Access Setup
- Networks and Communications
- Startup Options
- Time/Date/Regional Settings

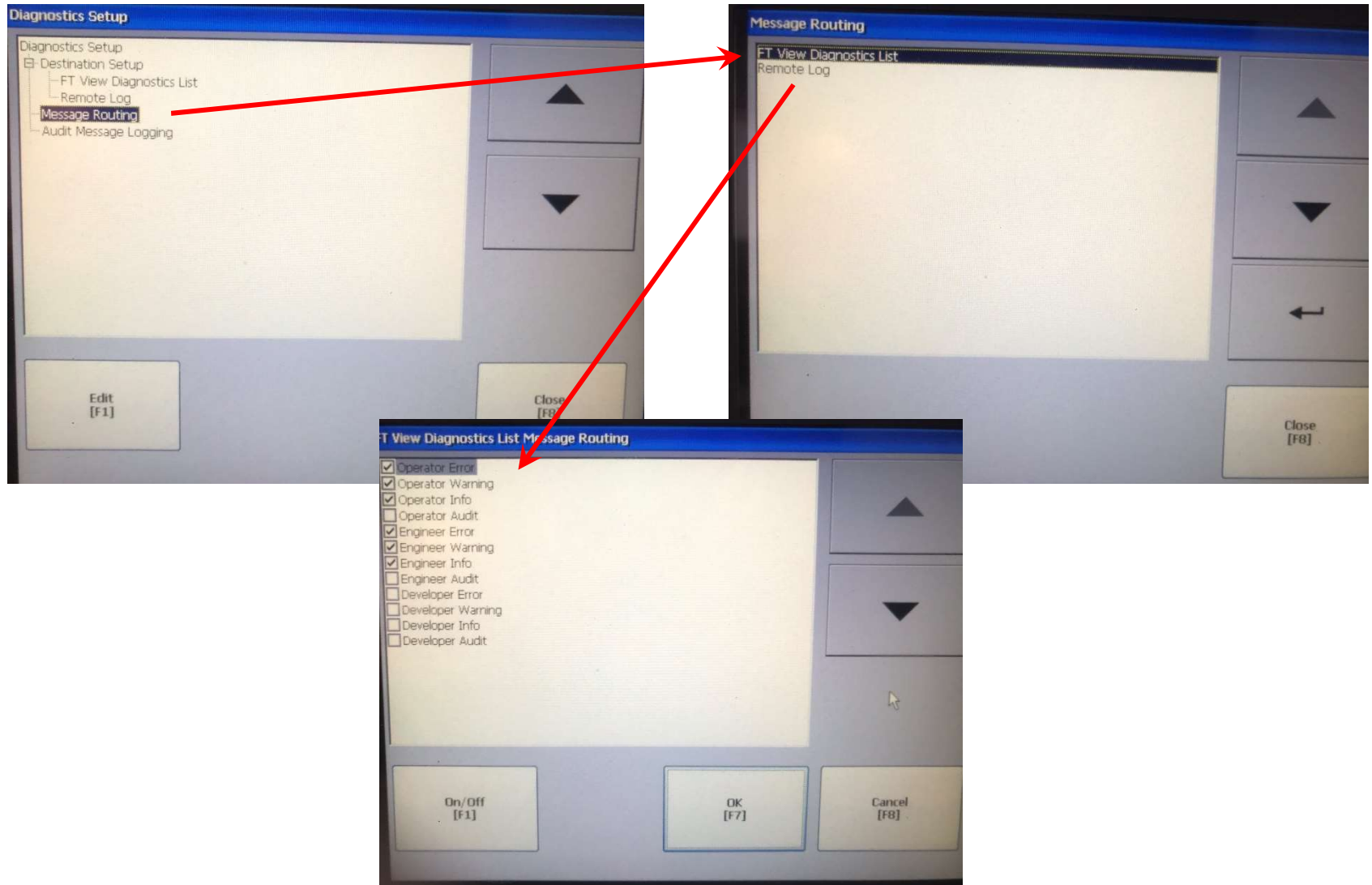
Diagnostic Setup



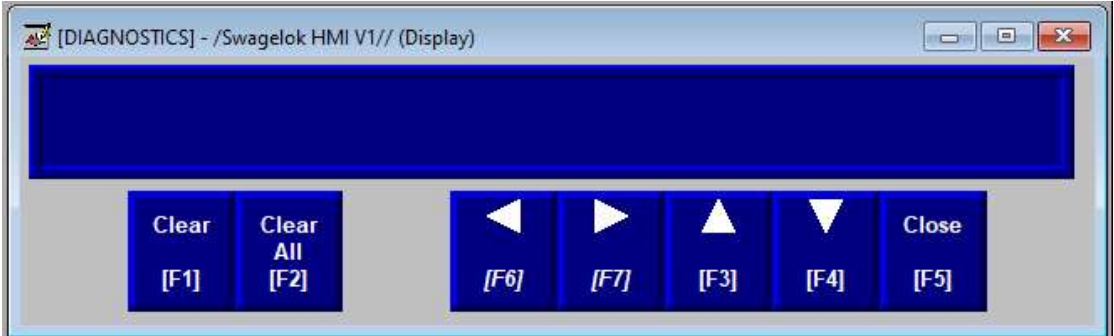
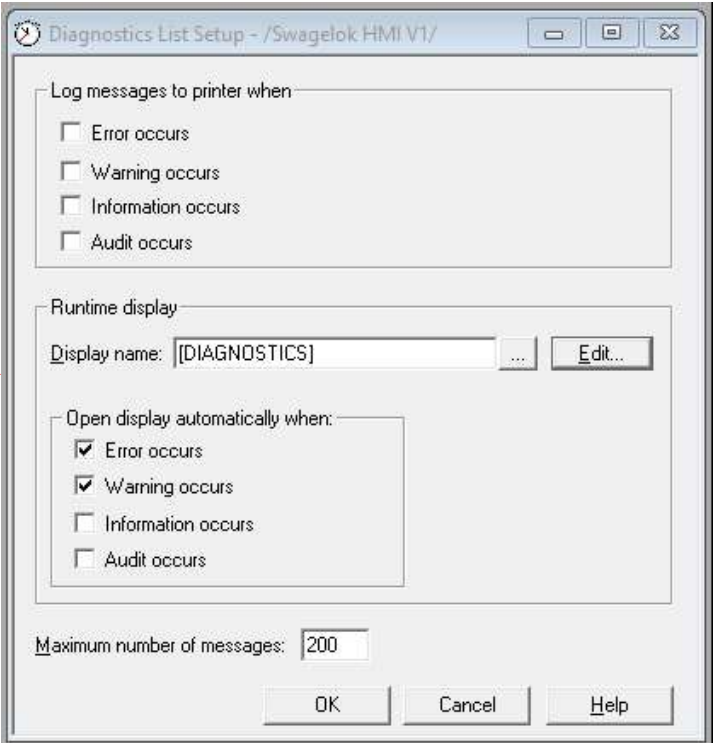
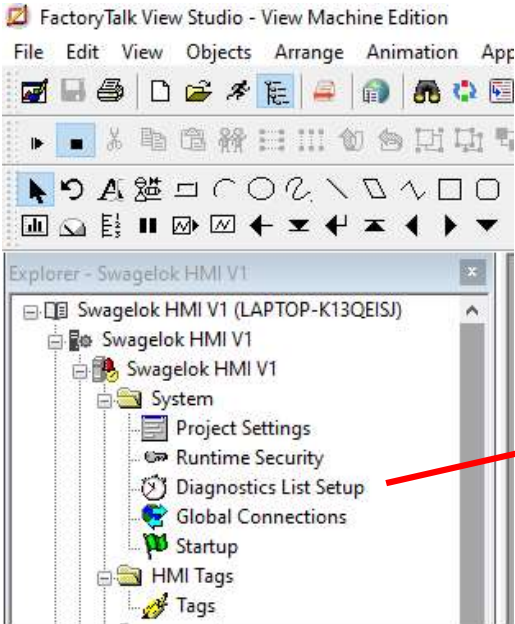
- FactoryTalk Diagnostics records information about various types of system activity, including:
 - Macro usage
 - Operator comments
 - System messages and errors
 - Errors from the communication network
 - Tag read and write activity
- You must set up FactoryTalk Diagnostics on both the development computer and the runtime computer.

Diagnostic Setup - Terminal

Swagelok



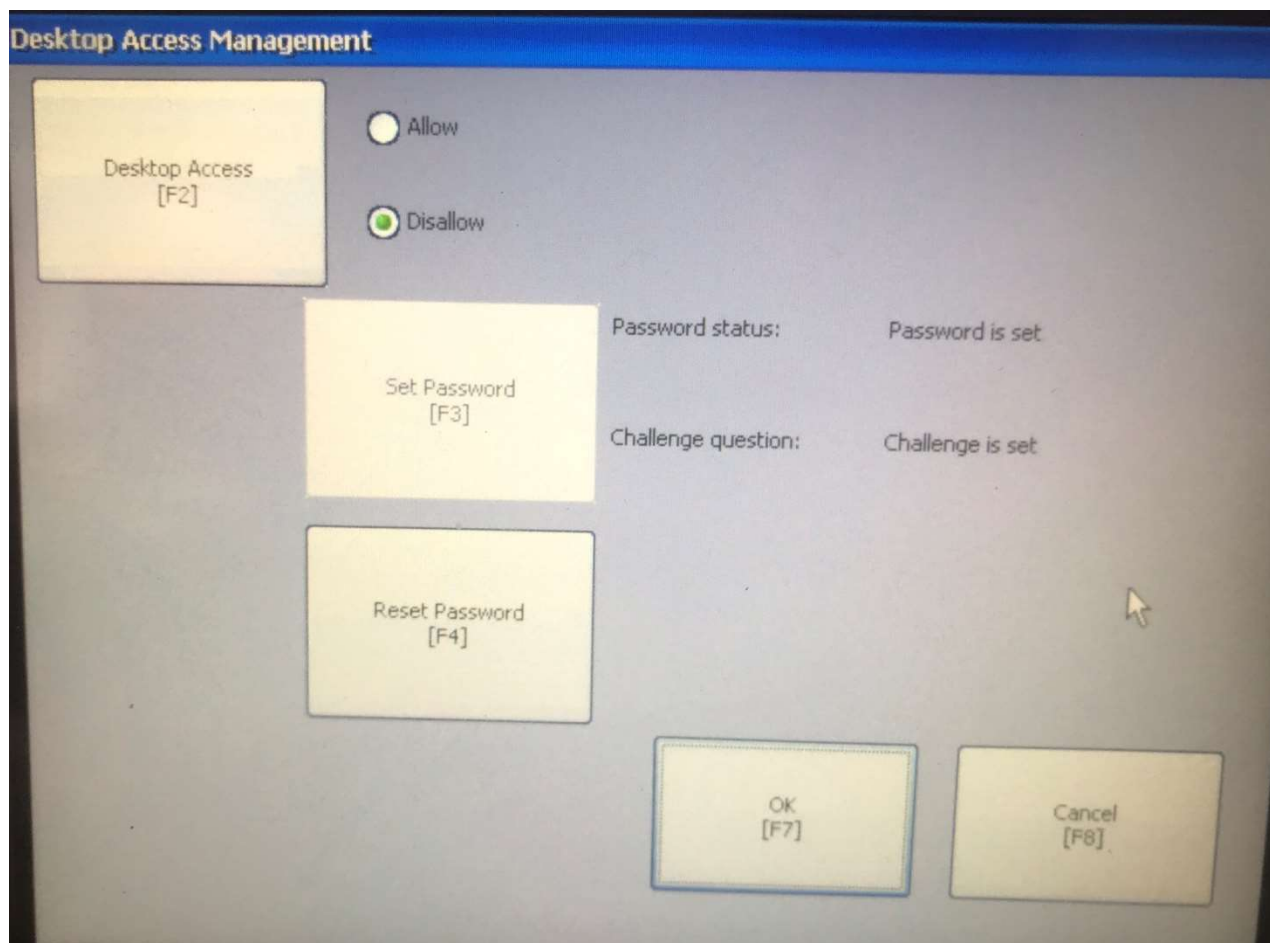
Diagnostic Setup – FT View



Windows CE Desktop Access Setup

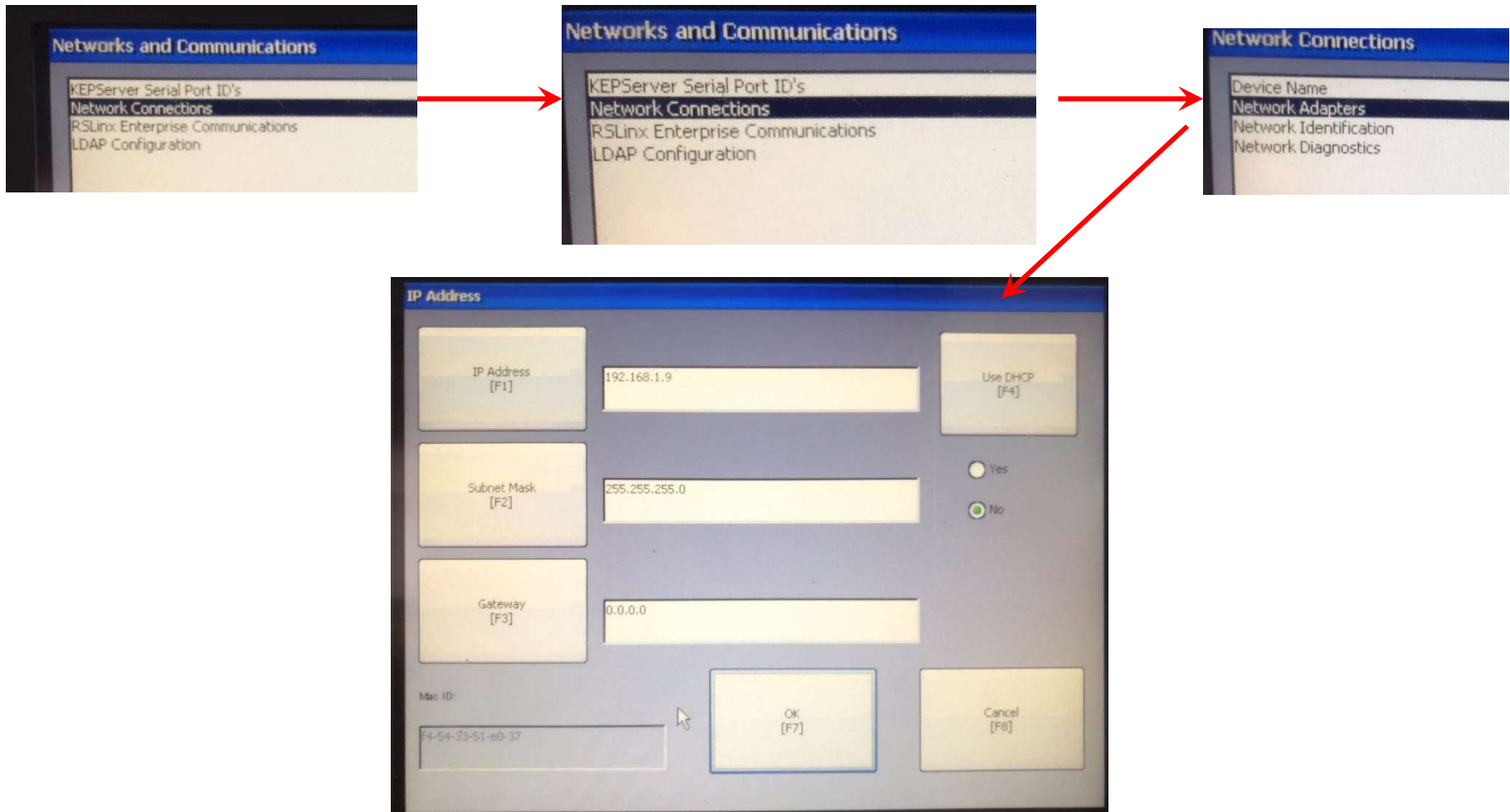
Swagelok

- Control access to the Windows CE desktop to access non-panel view applications such as PDF reader.

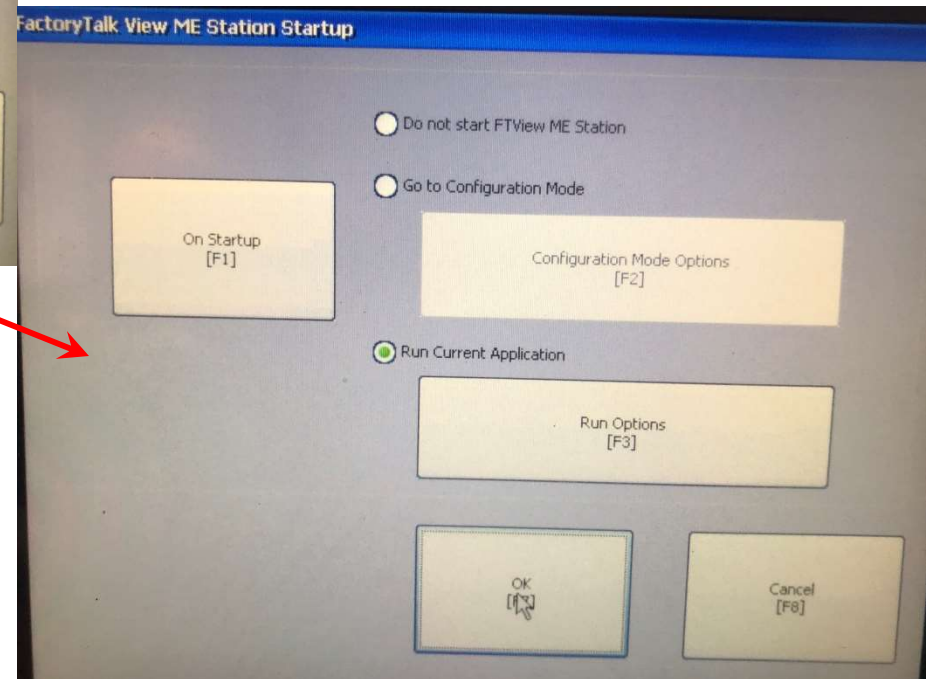
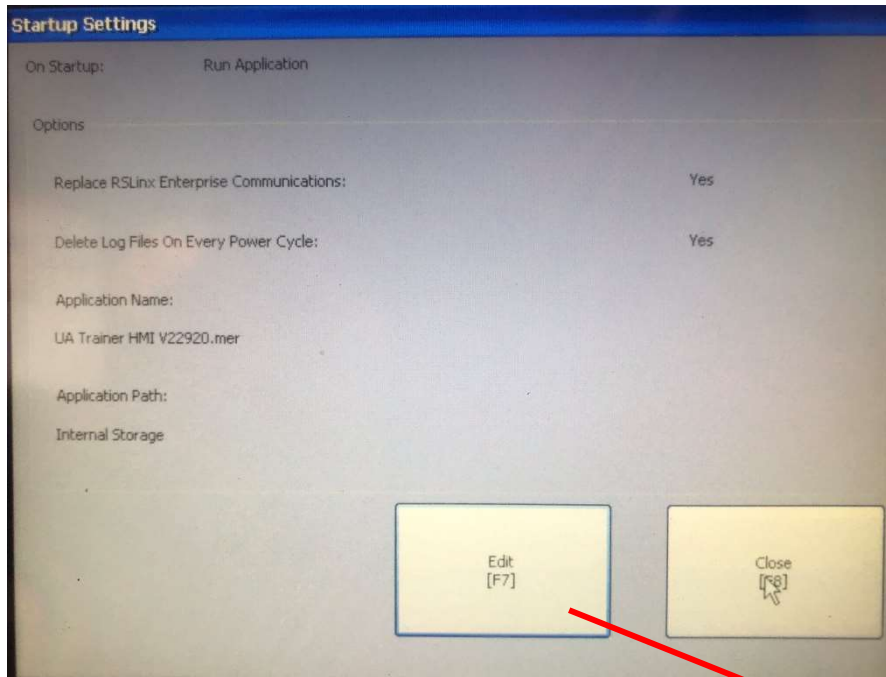


Networks and Communications

- Setting the IP Address



Start-up Options



File Management

Swagelok

