

FactoryTalk ME Applications

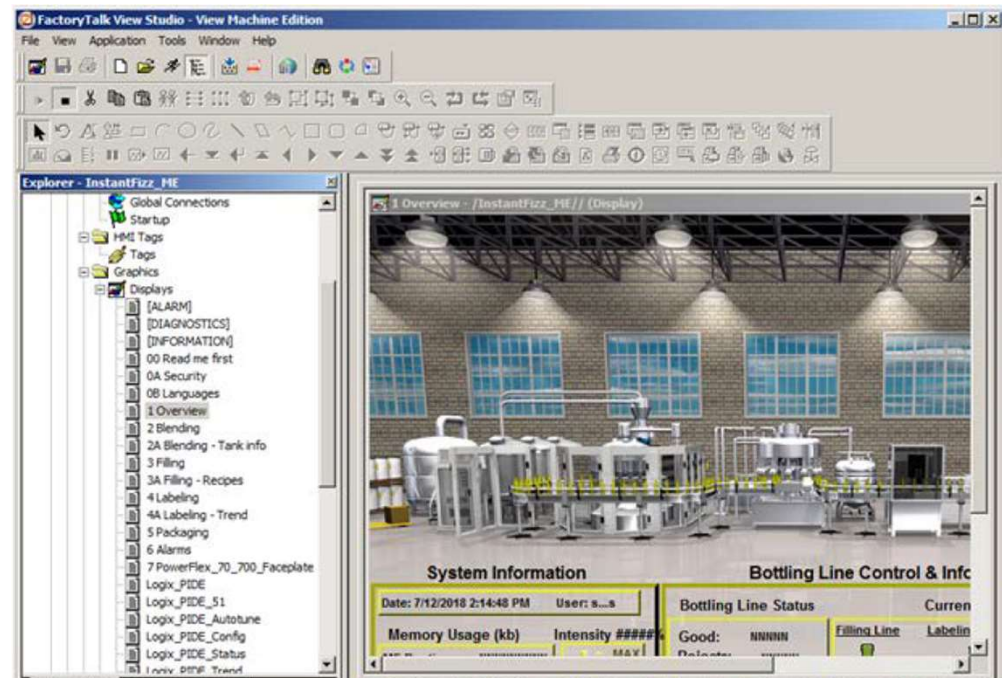
Dan Kandray

January 30, 2020

FactoryTalk View ME Software

Swagelok

- Provides human/machine interface for individual machines or small processes in a manufacturing environment
- Communicates with PLC FactoryTalk (RSLinx Enterprise) and OPC (OLE for Process Control) servers
- This software package is part of the FactoryTalk View Enterprise Series suite of software.



FactoryTalk View Studio Software Components



-
- FactoryTalk View Studio
 - Software containing the tools for creating machine-level monitoring and control applications, including real-time animated graphic displays, trends, and alarm reporting
 - FactoryTalk View ME Station
 - Software that provides the run-time environment for you FactoryTalk View Studio-designed project

In other words, use FactoryTalk View ME Station to run applications developed in FactoryTalk View Studio

Starting FactoryTalk View Studio...

Swagelok

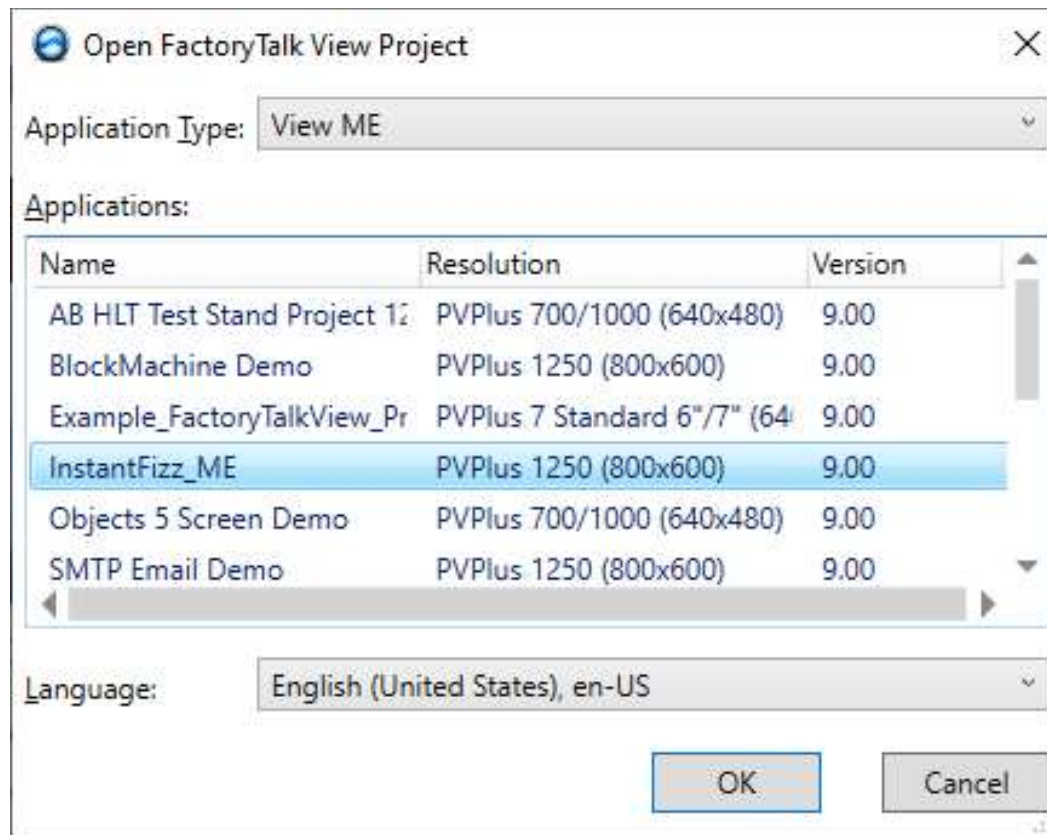
1. Select Studio 5000 from Windows Start Button
2. Under Existing Project, Select FactoryTalk View Project



Starting FactoryTalk View Studio...

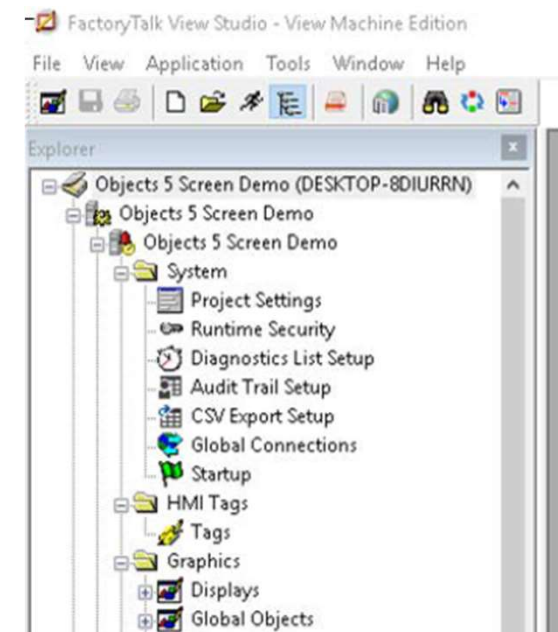
Swagelok

1. Select InstantFizz_ME application



What's an application

- An application is the software application you create in FactoryTalk View Studio to monitor and control your plant processes.
- An application consists of one or more data servers and an HMI project (also known as an HMI server).
 - The data servers provide communications for the project.
 - The project or HMI server consists of graphic displays, alarm information, user information, and other settings.



What's an application



- When you create an application, FactoryTalk View creates folders and files in various locations on the development computer.
 - Some of the folders are empty until you start setting up your application.
 - When you finish developing the application, FactoryTalk View uses the information in the various folders and files to create the runtime application.
 - The application is stored on the computer in:
 - **Users\Public\Public Documents\RSView Enterprise\ME\HMI projects**

Component Files

- Component files are located in folders in the HMI project folder, as described in the following table.

This folder	Contains	File extensions
Application name	HMI project file and the folders described below	.med
DLG	Data log models (component files)	.mdf
Gfx	Graphic display component files	.gfx
Global Objects	Global object display component files	.ggfx
Images	Image files	.bmp, .png, or .jpg
Information	Information message component files	.ifm
Local	Local message component files	.loc
Macros	Macro component files	.mcr
PAR	Parameter component files	.par
RecipePlus	RecipePlus component files	.rpp

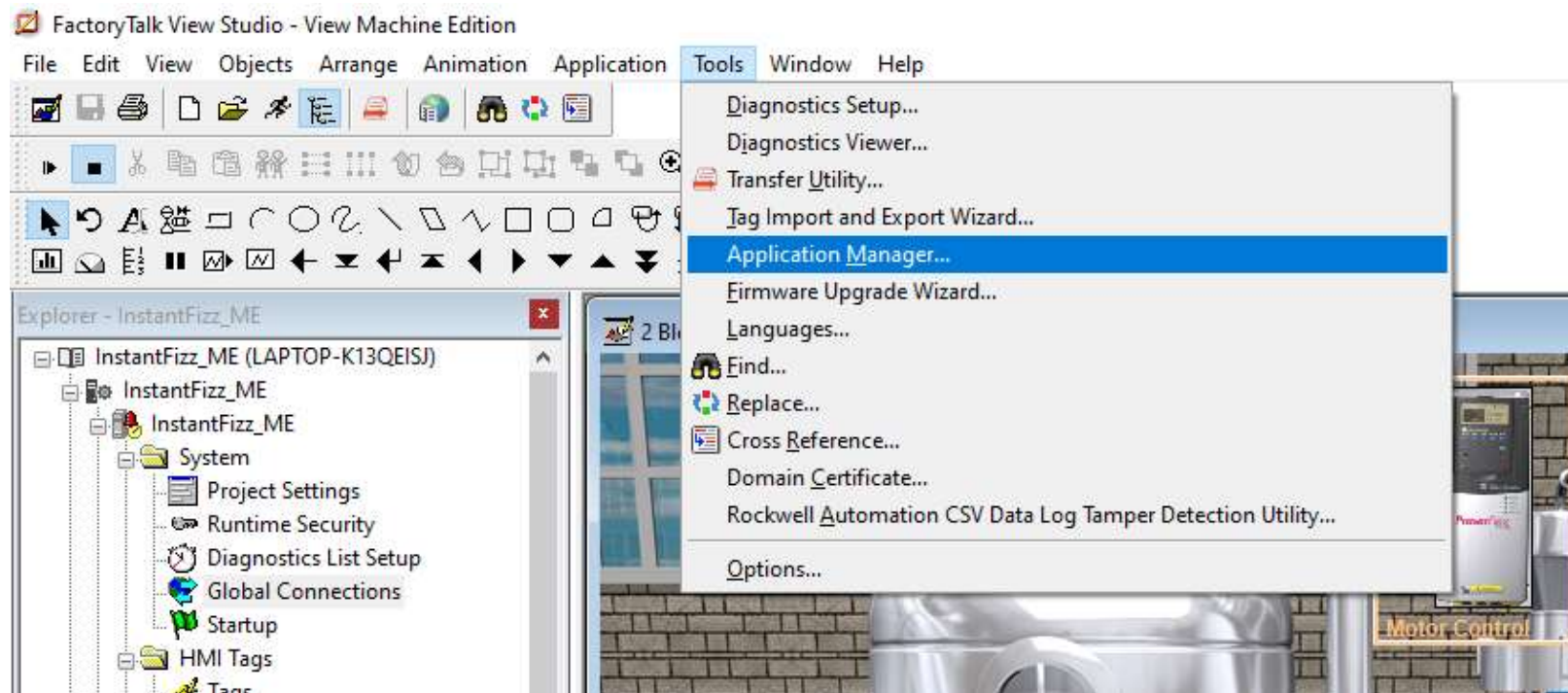
Application Manager



- A development tool that is used to:
 - Copy an application
 - Delete an application
 - Back up an application
 - Rename an application
 - Restore a previously backed up project or application
 - Restore a legacy project
 - Restore a design (.MED) file from a runtime (.MER) file
 - Note runtime files must be saved at V6.1 or above for the restore .MER file feature to be available

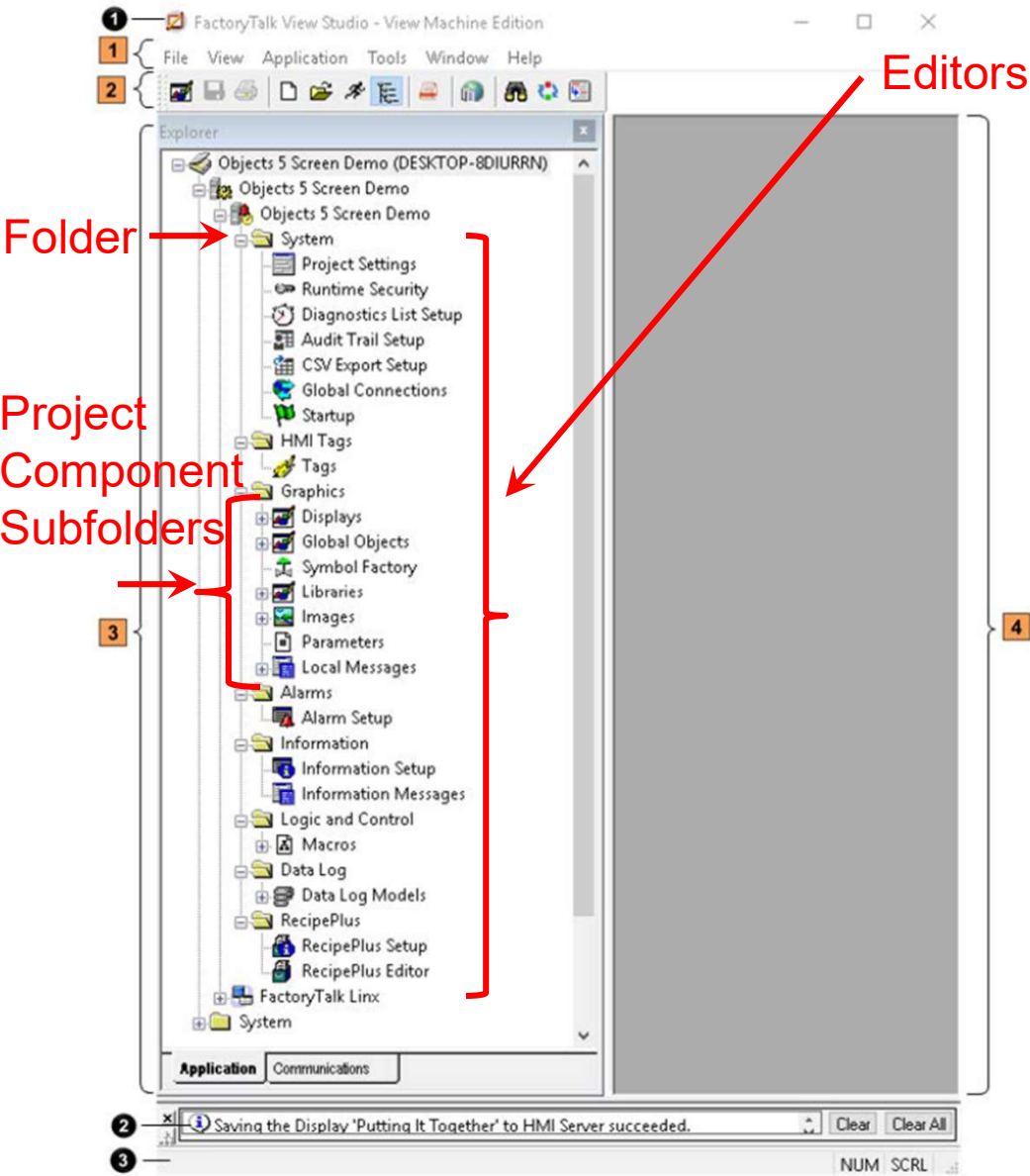
Application Manager

Swagelok



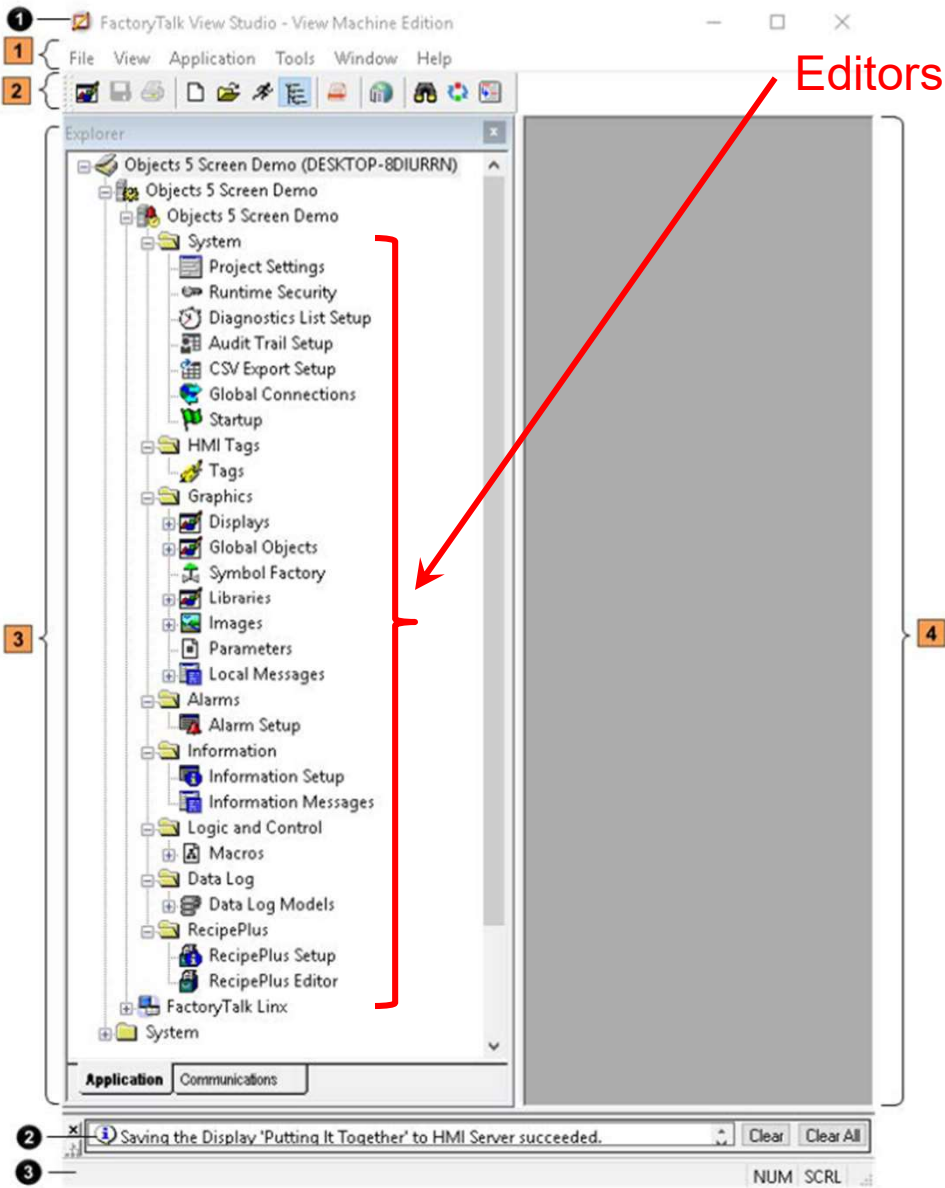
FactoryTalk View Studio main window

Swagelok



Item	Description
1	Menu bar
2	Tool bar
3	Explorer window
4	Workspace
1	Title bar
2	Diagnostics list
3	Status bar

FactoryTalk View Studio main window



Commonly used application components include:

- Graphic Displays
- Global Objects
- Graphic Libraries
- Images
- Data Log Models

Commonly used editors include:

- Tags
- Project Settings
- Startup
- Global Connections
- Alarm Setup
- Macro
- RecipePlus

Tag Editor

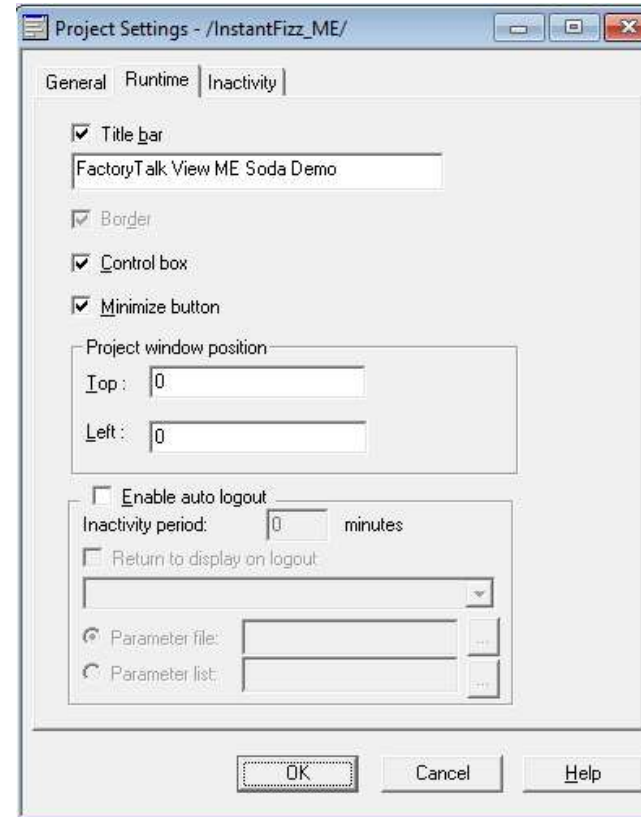
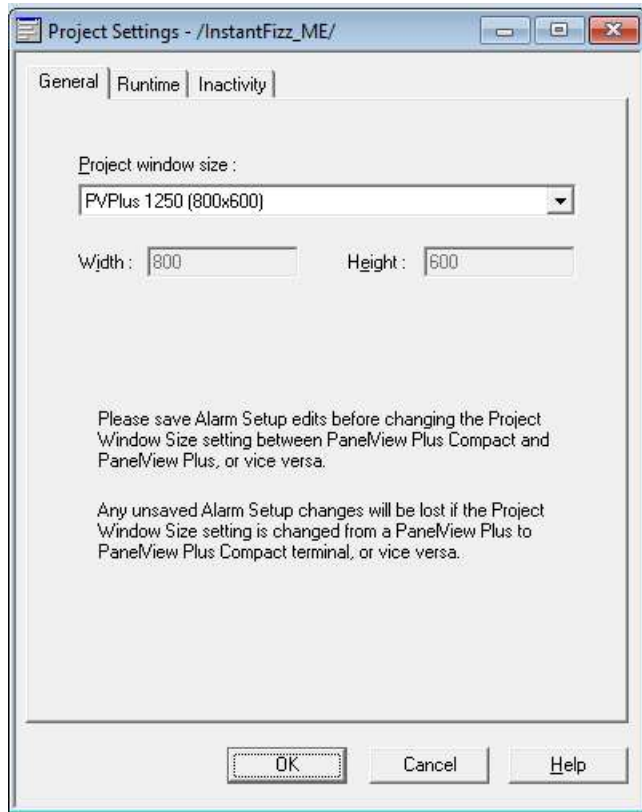
Swagelok

Tag Editor interface showing configuration for a tag named ATag1. The tag is of type Analog, with a minimum value of 0 and a maximum value of 10000. The scale is set to 1, and the offset is 0. The data type is Default, and the data source is Memory. The initial value is 0, and the tag is not retentive.

Tag Name	Type	Description
1 ATag1	Analog	
2 AvailableRAM	Analog	
3 File_Location	String	
4 intensity	Analog	
5 PercentCompleteTag	Analog	
6 RemoteRAM_bit	Digital	
7 RuntimeRAM	Analog	
8 StatusTan	Analog	

Project Settings Editor

- Double-click on “Project Settings” to open



Startup Editor

Start when project is run

- Alarms
- Information messages
- Data logging
- Startup macro
- Shutdown macro

Initial graphic displays

All optional displays:

- [INFORMATION]
- [ALARM]
- [DIAGNOSTICS]
- 6 Alarms
- 2 Blending
- 3 Filling
- 4 Labeling
- 0B Languages
- 0A Security

Selected displays:

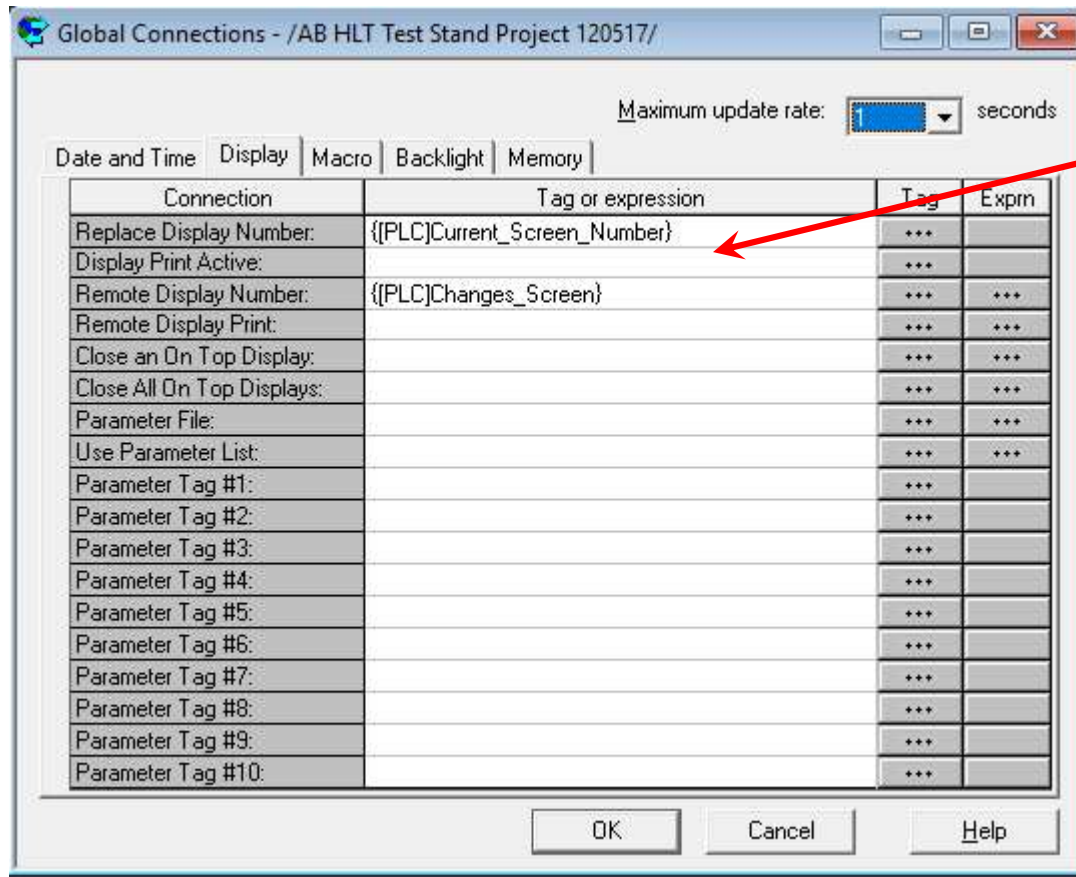
- 1 Overview

Parameter file

Parameter list

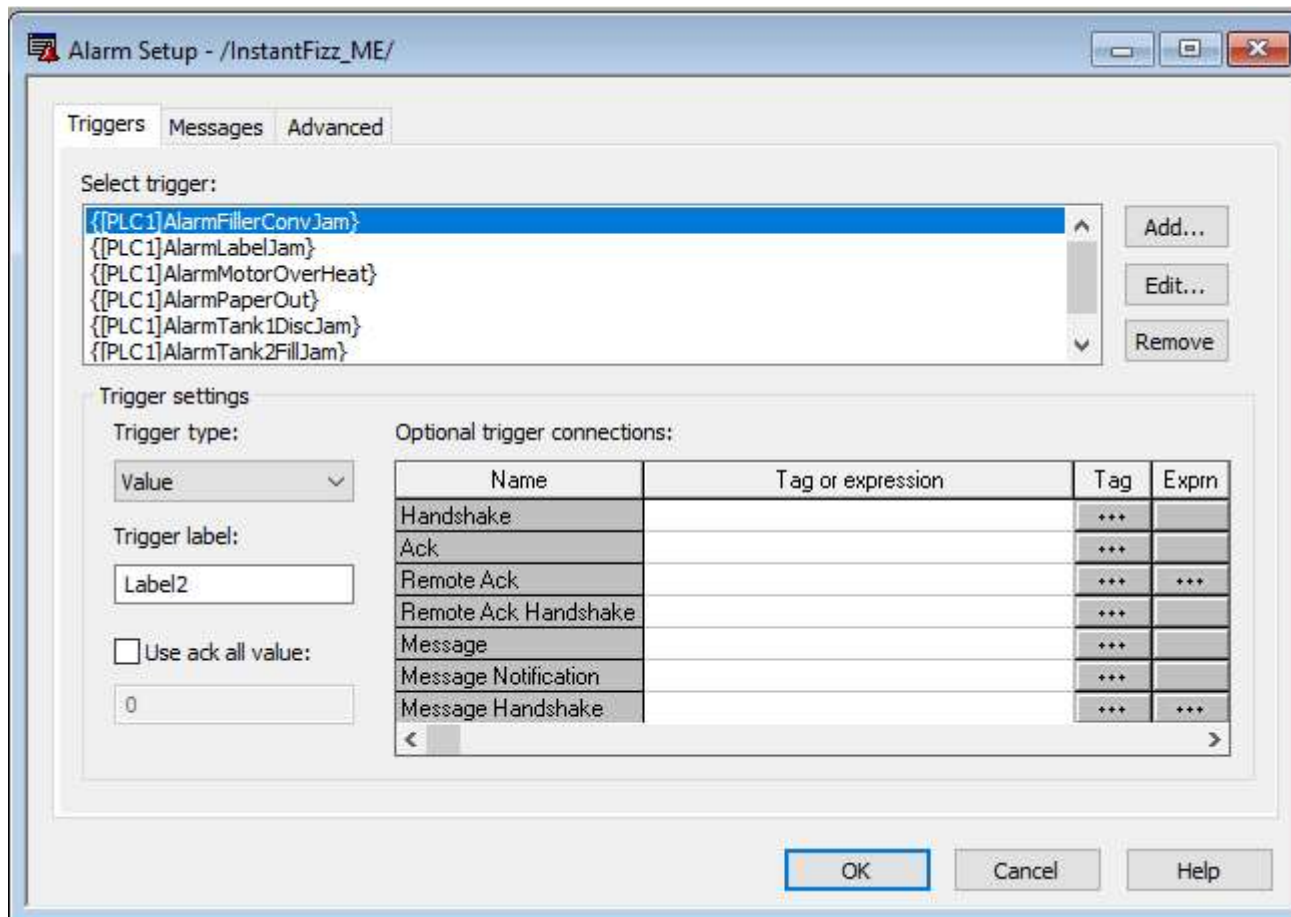
OK Cancel Help

Global Connections



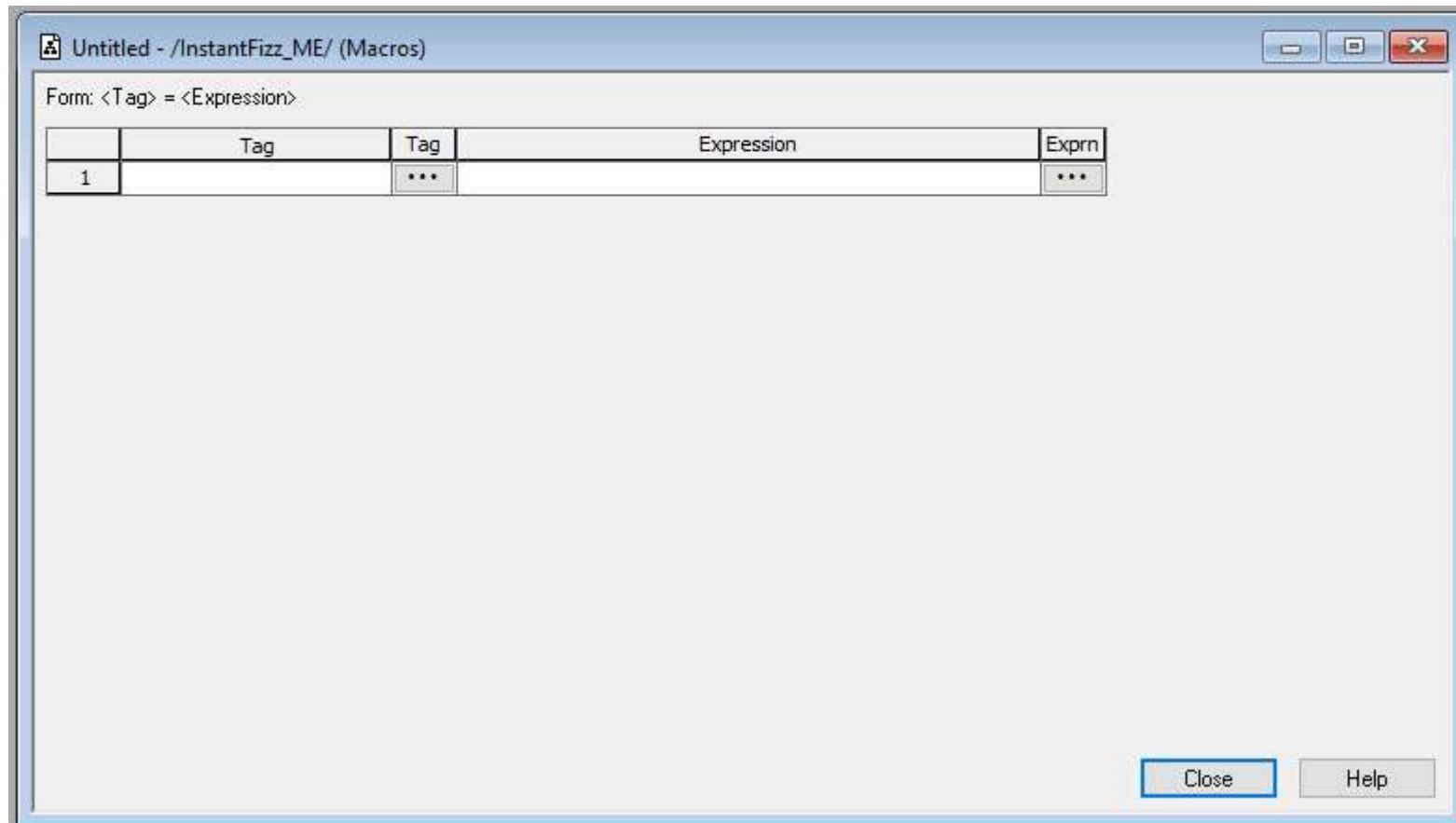
Note it is possible to link HMI screens to PLC Program

Alarm Setup



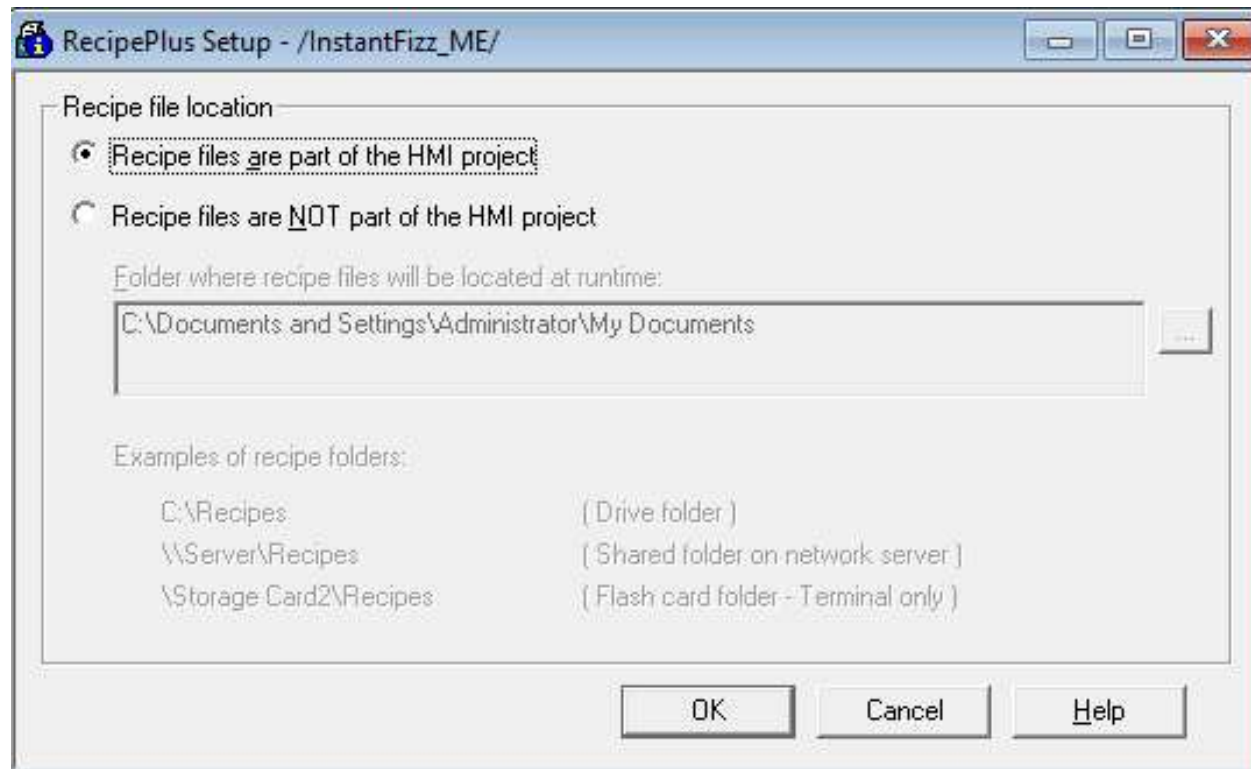
Macro Editor

Swagelok



Recipe Plus

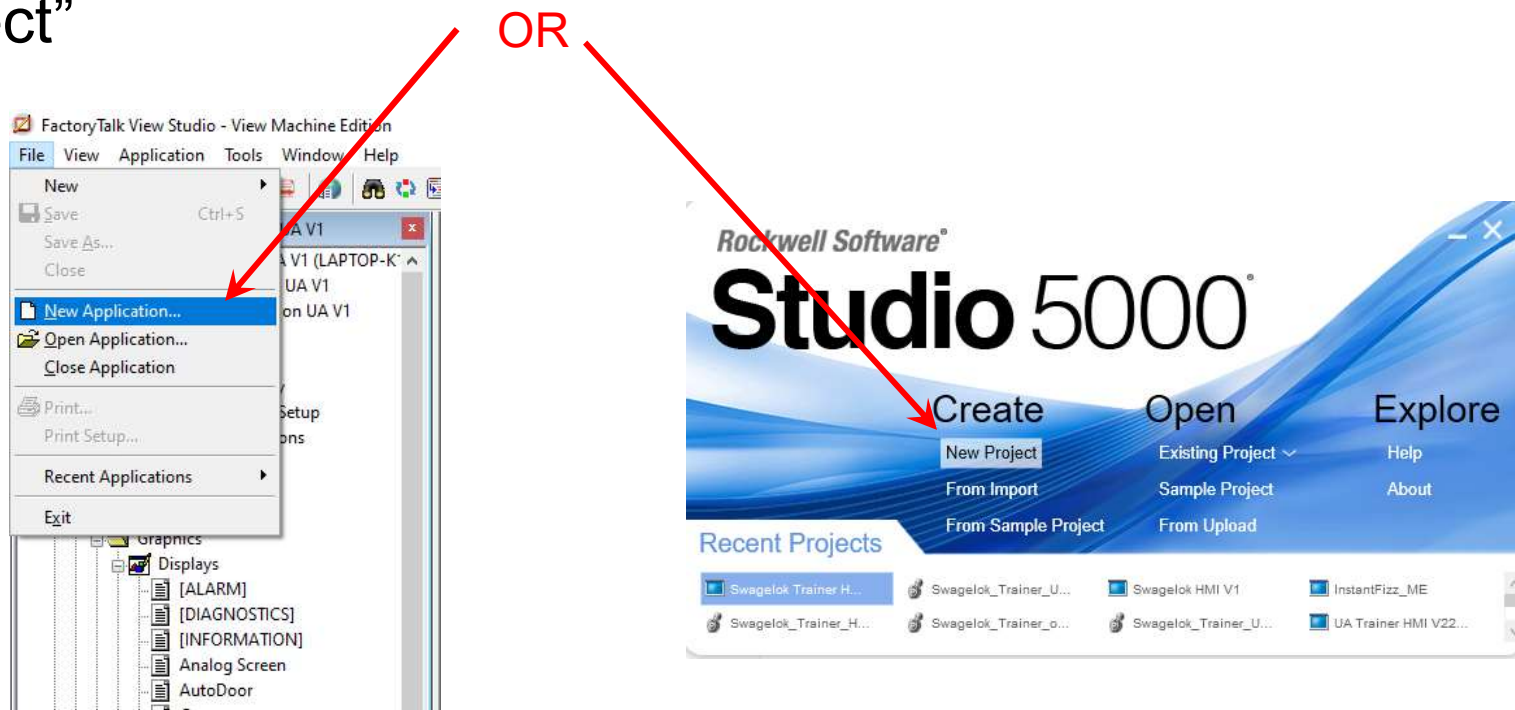
Swagelok



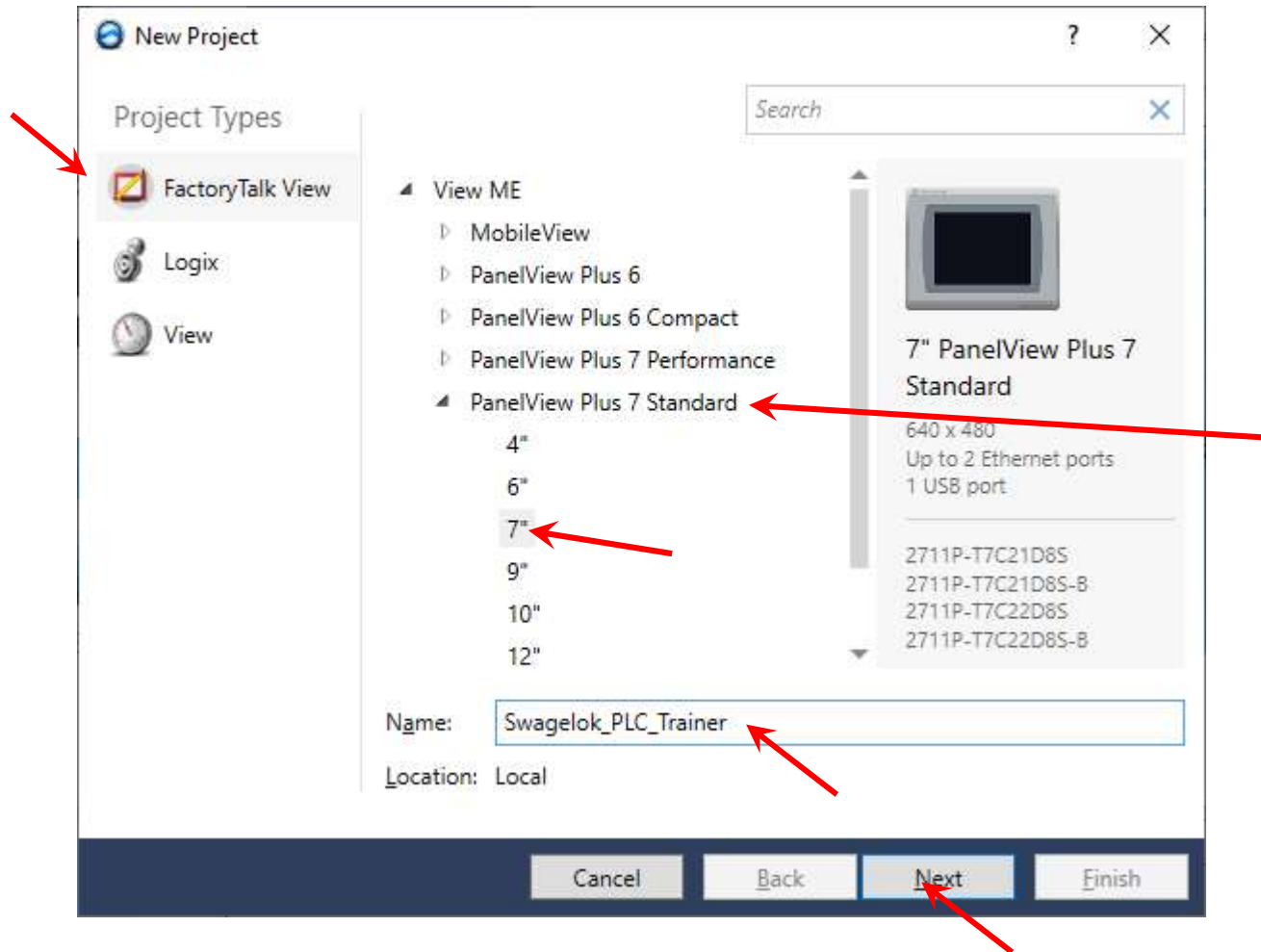
CREATING A NEW APPLICATION

Creating a New Application

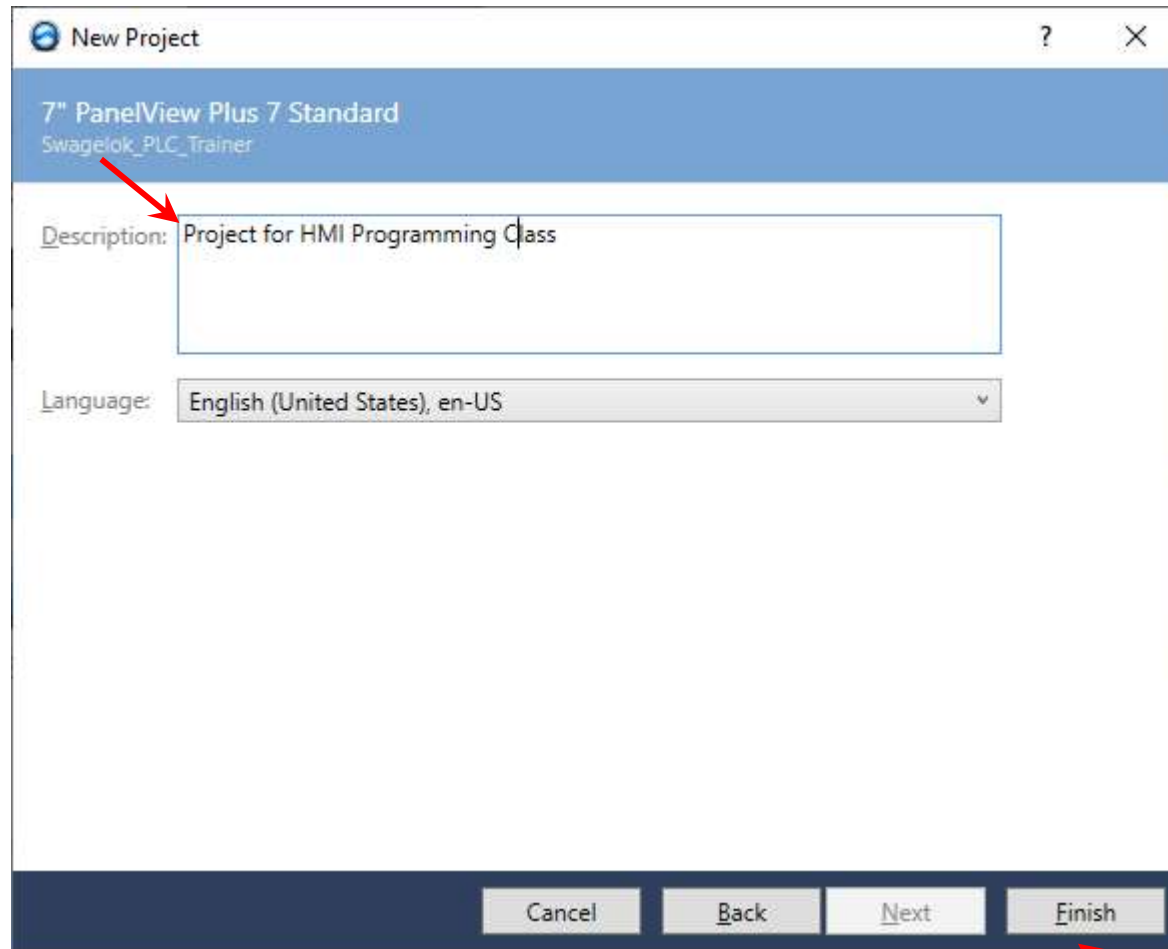
- Close any existing applications and Select “New Application” or from the Studio 5000 startup, select “New Project”



New Project Dialog Boxes

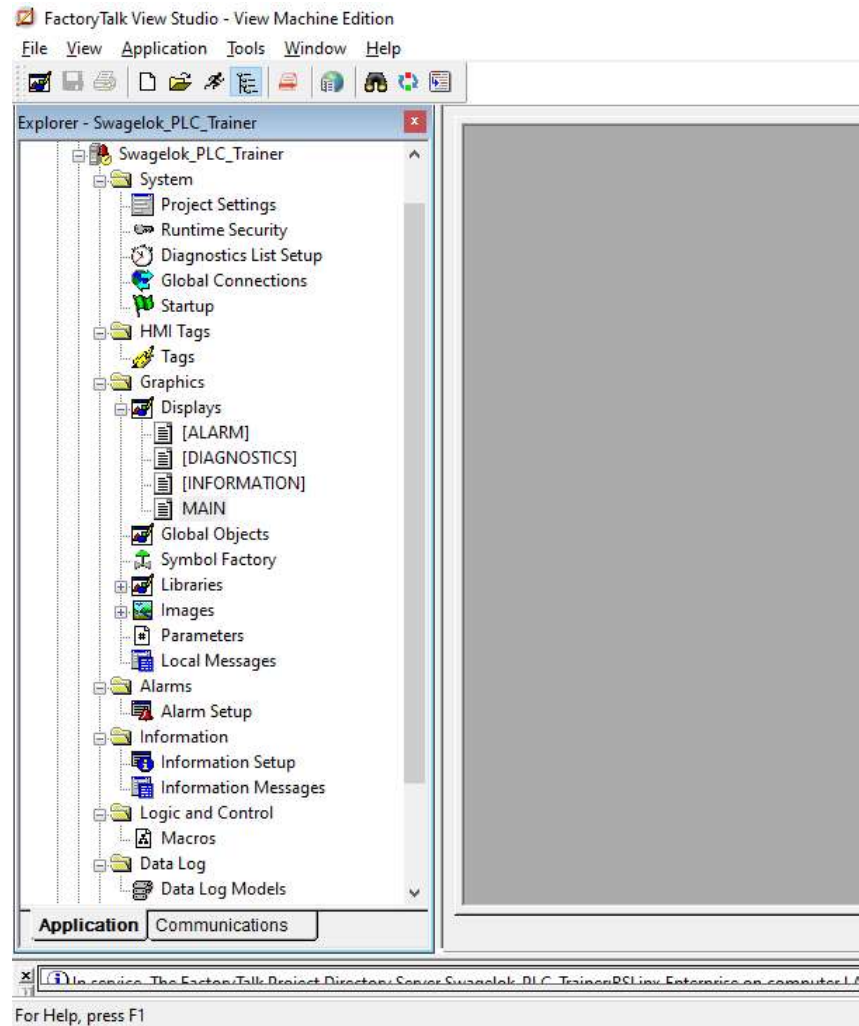


New Project Dialog Boxes



Completed New Project

Swagelok



Import an Application

- Alternatively, the following application files can be imported to FactoryTalk View Studio and then converted to current version FactoryTalk View Machine Edition application files using Machine Edition Import Wizard:
 - PanelBuilder® application (.pba or .pva)
 - PanelBuilder32 application (.pba or .pva)
 - PanelBuilder 1400e application (.pvc)
 - RSView® Machine Edition application (.med)
 - FactoryTalk View Machine Edition application (.med)

Older Versions



- It is possible to open and edit applications from earlier versions of RSView or FactoryTalk View ME
 - You can open and edit applications from RSView 3.10, 3.20, and FactoryTalk View 4.0, 5.0, 6.0, 6.10, 7.0, 8.0, 8.10, 8.20, 9.0, and 10.0.
 - When you are finished editing, you can create runtime application files for ME Station version 5.0, 5.10, 6.0, 6.10, 7.0, 8.0, 8.10, 8.20, 9.0, 10.0, and 11.0.
 - This allows you to continue running your applications on existing terminals, without upgrading all your software.